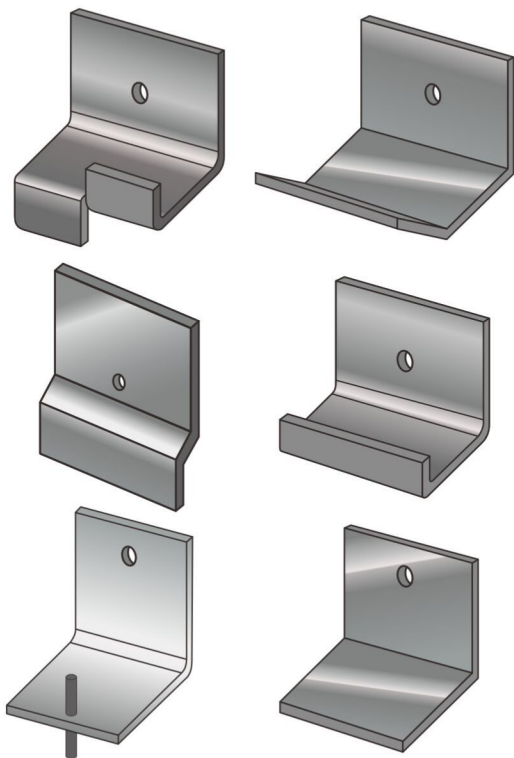


## 基本資訊 Basic Information

## SUNWAY Standard S.S. Bracket 新和標準不鏽鋼碼片



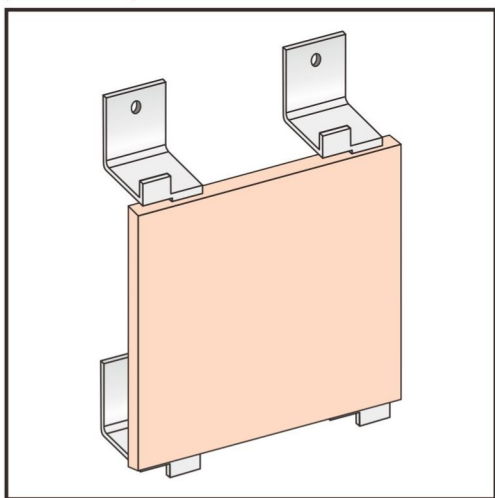
SUNWAY has more than 30 years experience specialized in the production of stainless steel bracket. Different kinds of brackets could be tailor-made upon customers requests.

### Features:

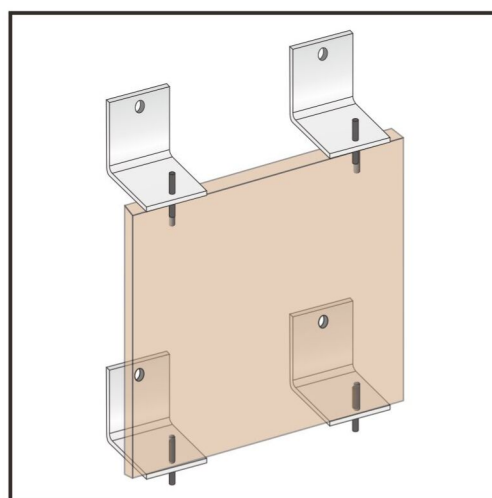
- A very common and safe element for stone cladding installation
- Capable to fix stone panels to different building substructure
- Strong mechanical resistance, in order to withstand the wind loads and stone panels weight
- Immune to different forms of corrosion

Material: Stainless steel 304/316  
Thickness: 3mm - 8mm

Stainless steel brackets are very important components in the structural fixing system of stone cladding construction. They connect the stone panels and building substructure in order to withstand the stones weight and wind pressure, so that the stone panels could be maintained in the specified positions.



Example1.  
A stone panel fixed by kerf brackets



Example2.  
A stone panel fixed by pin brackets  
Drawing for reference only

June 2019

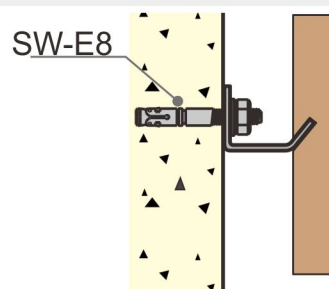
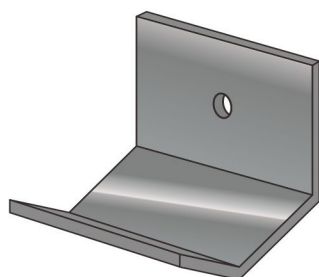
## 應用方法 Application

## SUNWAY Standard S.S. Bracket 新和標準不鏽鋼碼片

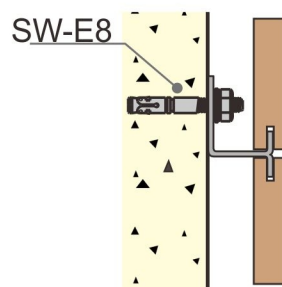
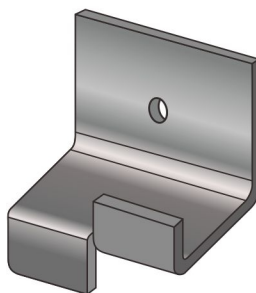
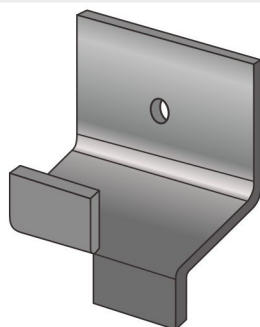
The following application samples are just for references.

To ensure the safety, the whole bracket fixing system, including the size and type of bracket, the quantity of bracket will be used and etc., should be designed and gone through a precise structural calculation by chartered engineers or related authorities before using.

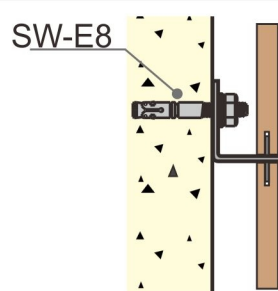
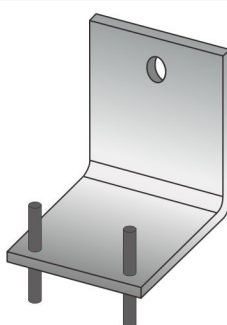
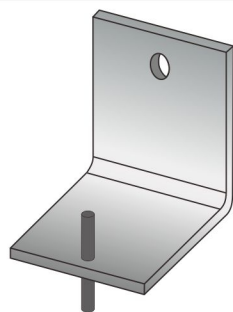
### Back Bracket



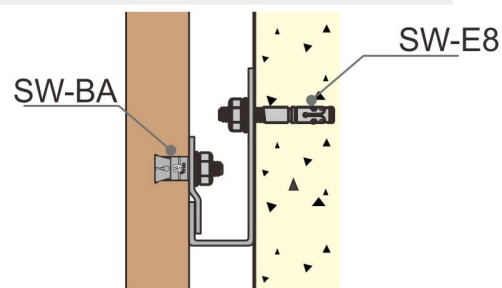
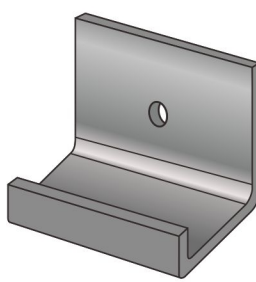
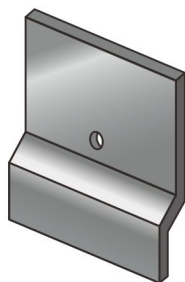
### Kerf Bracket



### Pin Bracket



### Stone Back Bracket and J Bracket



Stone Back Bracket

"J" Bracket

Drawing for reference only  
April 2019