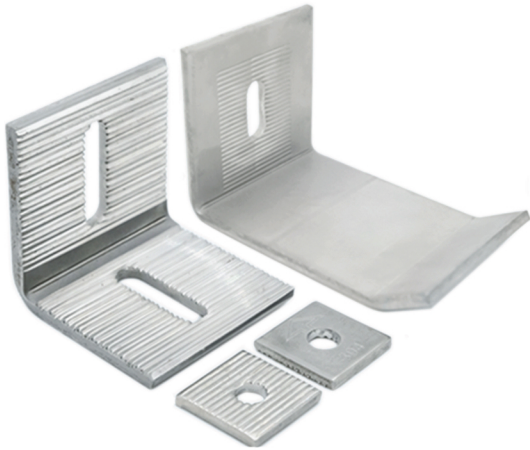


基本資訊 Basic Information

SUNWAY SW-A2/A3 Anti-Slip Bracket 新和不鏽鋼防滑碼片 (SW-A2/A3)



Material:
Stainless Steel 304/316L
Thickness:
3mm - 8mm
(For tailor-made design, please order in advance)

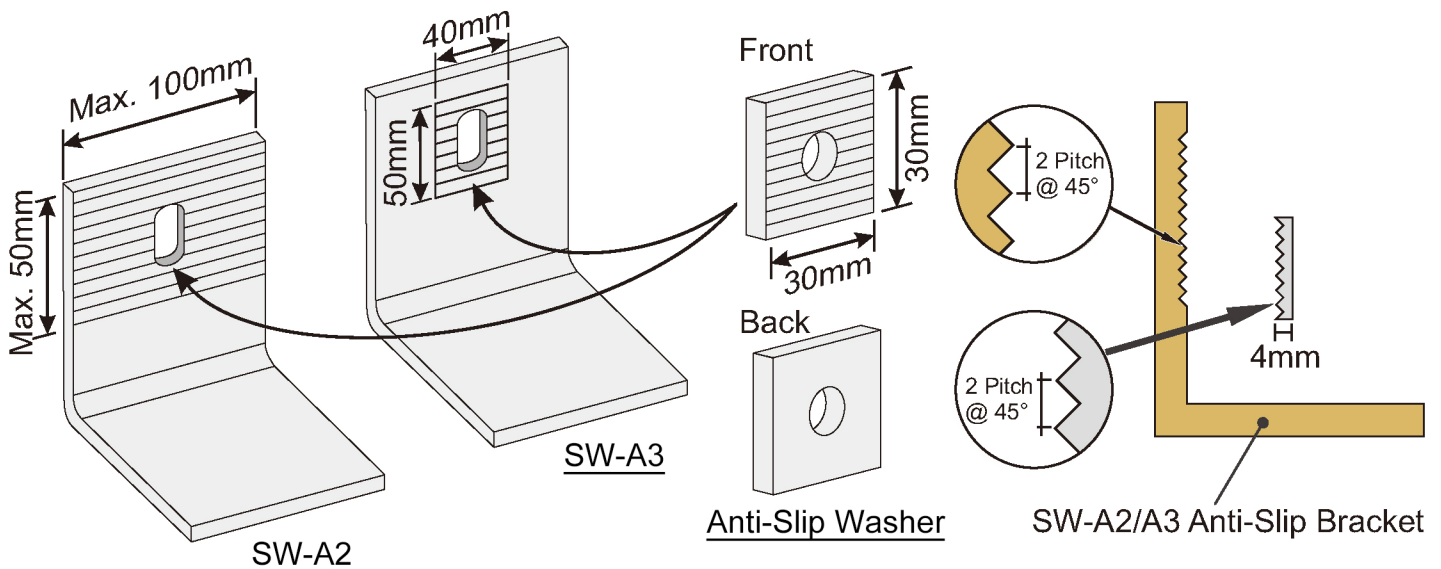
SUNWAY SW-A2/A3 Anti-Slip Bracket is a very convenient and safe design for the brackets with slot hole. It has already included in Architectural Services Department's List of acceptable materials (**Ref. No.:1948P**). Different kinds of brackets could be tailor-made upon customers requests.

Advantages:

- Providing stronger friction between the bracket and washer, effectively prevent bracket's slip
- Capable to bear 3 times as much loading as the normal brackets with plain washers (According to Poly University's test report)
- No welding is necessary, installation could be much faster and more convenient
- Has already included in Architectural Services Department's List of Acceptable Materials (Ref. No.:1948P)

尺寸 Dimensions

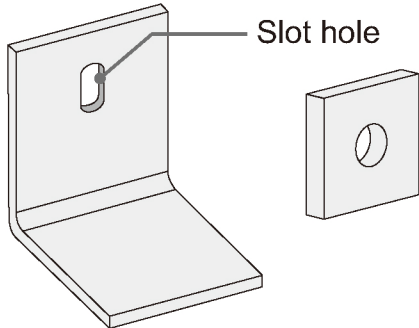
The production methods for SW-A2 and SW-A3 are different. The respective typical dimensions are as follows:



For tailor-made design, please contact us.

Drawing for reference only
September 2021

優勢
Advantages

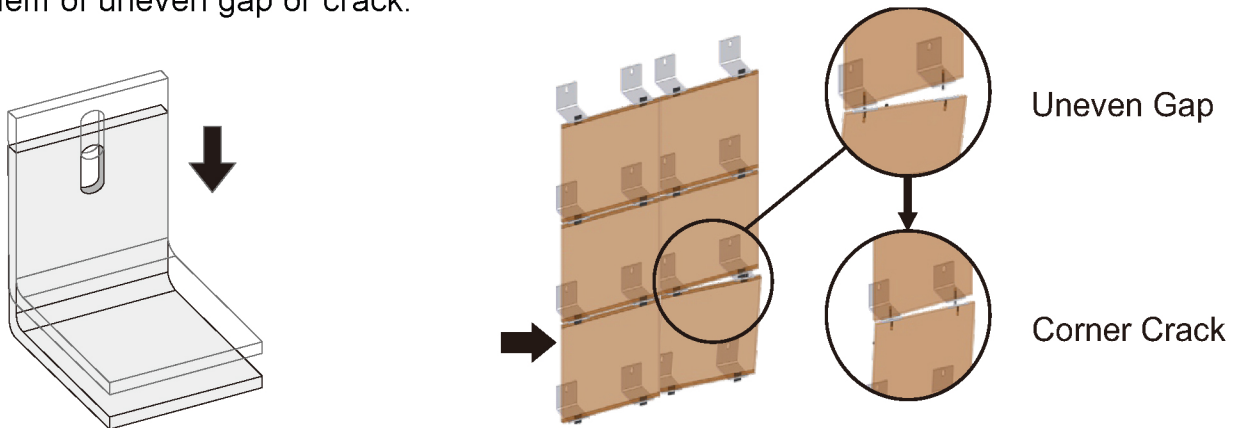


Slot hole design is very common as it could increase the flexibility of brackets installation in the actual construction sites.

For example, to avoid colliding with reinforcing bars or pipes inside the concrete.

Bracket without Anti-Slip design

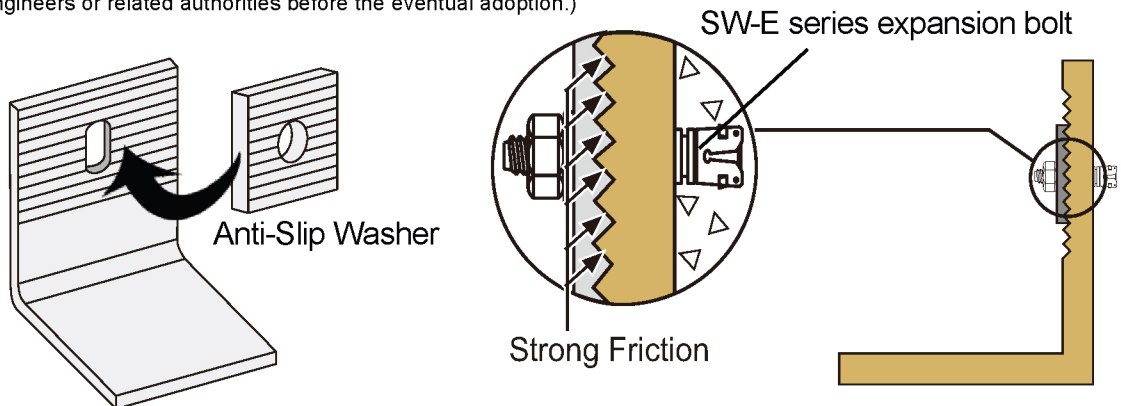
In general, during the installation process of the bracket with slot hole, the plain washer should be welded on the bracket. If not, the weight of stone panels may possibly cause the plain washer slip over the slot hole. As a result, stone panels' location will move and induce the problem of uneven gap or crack.



SUNWAY SW-A2/A3 Anti-Slip Bracket

When a SW-A2/A3 Anti-Slip bracket operate with an anti-slip washer, both serrated side cling together to create a very strong friction. This design could not only effectively prevent the washer or bracket's slip, but also shorten the installation time as welding is not necessary.

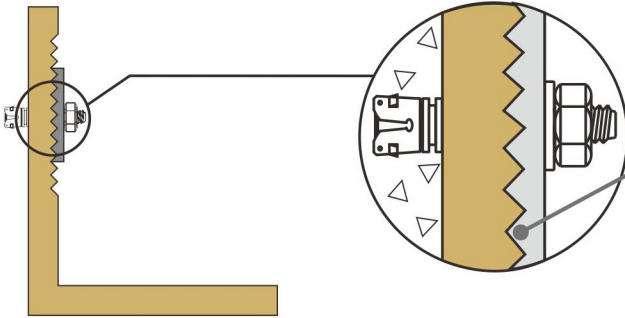
(**This anti-slip design cannot fully comparable with the welding installation, test reports and data has shown in page 4, customers should consult the structural engineers or related authorities before the eventual adoption.)



SW-A2/A3 Anti-Slip Bracket

安裝方法

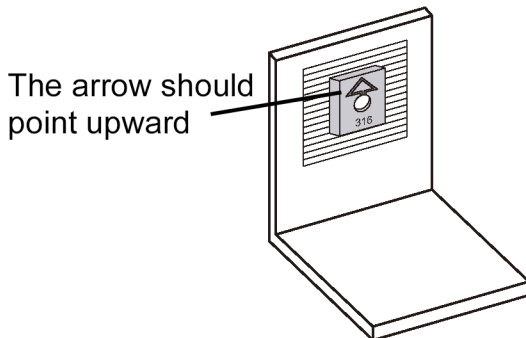
Installation Method



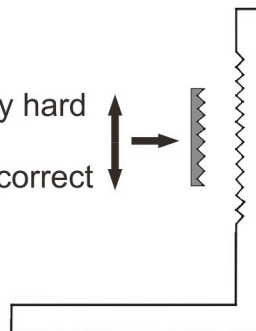
The anti-slip washer must correctly align and cling to the bracket's serrated surface, and then fix them by tightening the nut with suitable torque.

✓ **Correct Installation Method**

The anti-slip washer must be vertically installed on the bracket's serrated surface, after fix it by tightening the nut, should test whether the washer is movable or not. If it is movable, should slightly adjust the washer's position.

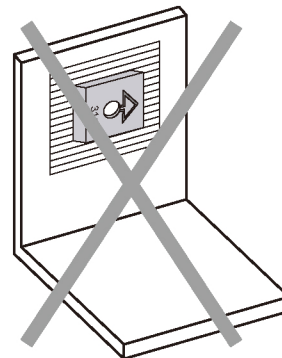
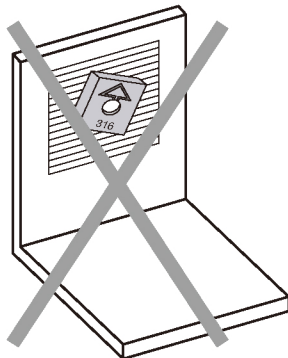


Washer is very hard to move if the installation is correct



✗ **Incorrect Installation Method**

If the anti-slip washer is not vertically installed, the performance of anti-slip function will be weakened. The following pictures show the incorrect installation.



Drawing for reference only

September 2021

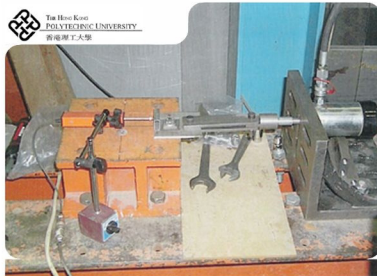
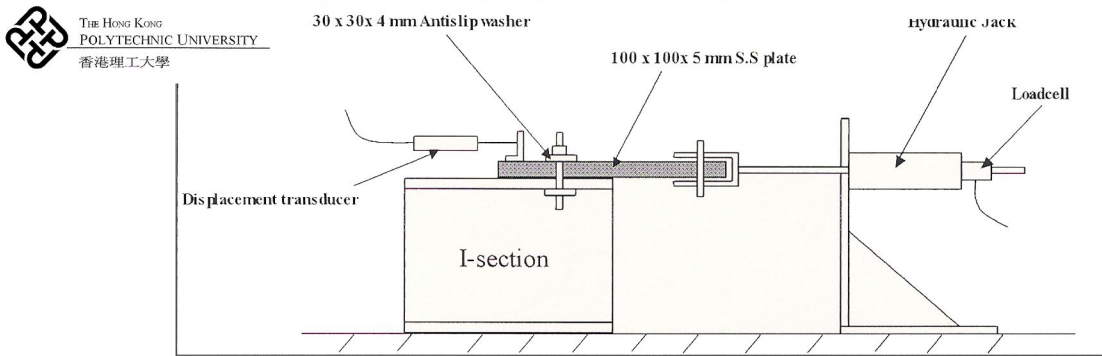
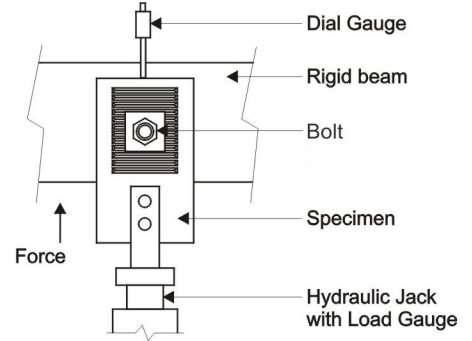
測試結果
Test Report

Test : To determine the max. load capacity before slipping taking place

Ref. No. : 015/2001/YMC(Polytechnic University)
S-AS-99-08(Sunway)

Samples : 1) 100 x 100 x 5mm normal S.S. plate
with 30 x 30 x 4mm plain washer.

2) 100 x 100 x 5mm SUNWAY SW-A2
S.S. plate with 30 x 30 x 4mm Anti-Slip
Washer.



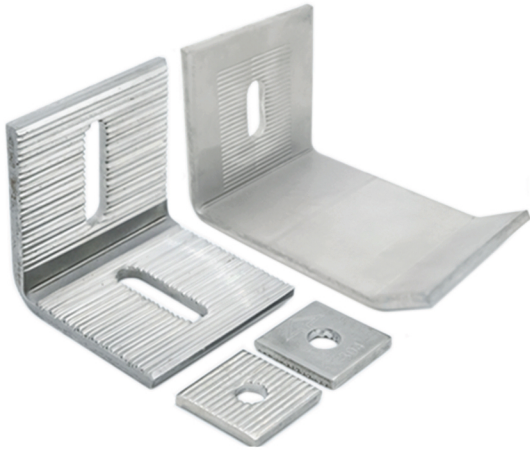
Result:

Normal S.S. Plate with plain washer	
Bolt Size	Max. Load before slide
M8	471kg
M10	723kg
M12	789kg

SW-A2 S.S. Plate with Sunway anti-slip washer	
Bolt Size	Max. Load before slide
M8	1415kg
M10	2240kg
M12	3221kg

Conclusion :

SW-A2 Anti-Slip Bracket could at least bear 3 times as much loading as the normal bracket with plain washer.



 ASD Reference No. : 1948P

Our SW-A2 Anti-Slip Bracket has already included in Architectural Services Department's List of Acceptable Materials

We are the first supplier in HK to provide stainless steel anti-slip bracket for building front facade in HK, brackets have been used in the stone facade projects as below :

- | | |
|---|-----------------------|
| - Cheng Yu Tung Building, CUHK | - 香港中文大學鄭裕彤樓 |
| - Cyberport | - 數碼港 |
| - Club Lusitano | - 西洋會所 |
| - Dargon Air VIP Lounge
(HK International Airport) | - 港龍航空貴賓室
(香港國際機場) |
| - H.K. Electric Headquarters (Kennedy Road) | - 港燈總部(堅尼地道) |
| - Constellation Cove, Tai Po | - 大埔滌濤山 |
| - Miu Fat Buddhist Monastery | - 妙法寺 |
| - One Silver Sea | - 一號銀海 |
| - Manhattan Hill | - 曼克頓山 |
| - Mount Beacon | - 畢架山峰 |
| - Cheung Yip Street, Kowloon Bay Project | - 九龍灣祥業街項目 |
| - International Commerce Centre (ICC) | - 九龍站7期環球貿易廣場 |
| - West Kowloon Government Offices | - 西九龍政府合署 |
| - Kerry Hotel Hong Kong | - 香港嘉里酒店 |
| - Ho Man Tin Station | - 何文田站 |
| - MGM Cotai, Macau | - 澳門美獅美高梅 |
| - Island Garden, Shau Kei Wan | - 香島, 筲箕灣 |