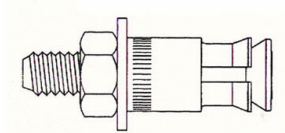


Re : Stainless Steel Stone Back Anchor

We would like to certify that the Stainless Steel stone back anchor model SW-BA M8 x 40, produced by Sunway Metal Manufactory Ltd., had been recently used in these projects as listed as below and there isn't any damage to the stone panel during installation.



- Development of Former Hong Kong Marine Police Headquarter (Tsim Sha Tsui Shan) Project
- No. 7 York Road, Kowloon Tong.

Yours faithfully,

For and on behalf of
SPRING WARM ENGINEERING LIMITED
春和工程有限公司

.....
Authorized Signature(s)

(Signature and Company Chop)

2 September 2008